

Contents

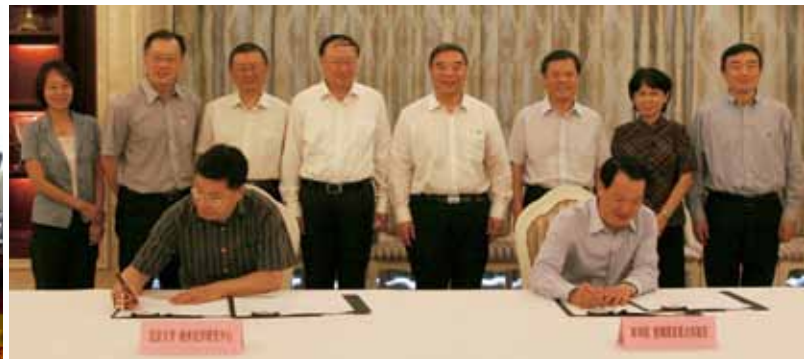
2015 9 96



1

4 1





22

40

26

42

29

45

8

32

46

9

35

48

—

36 × + + + =



9 7

1000

3

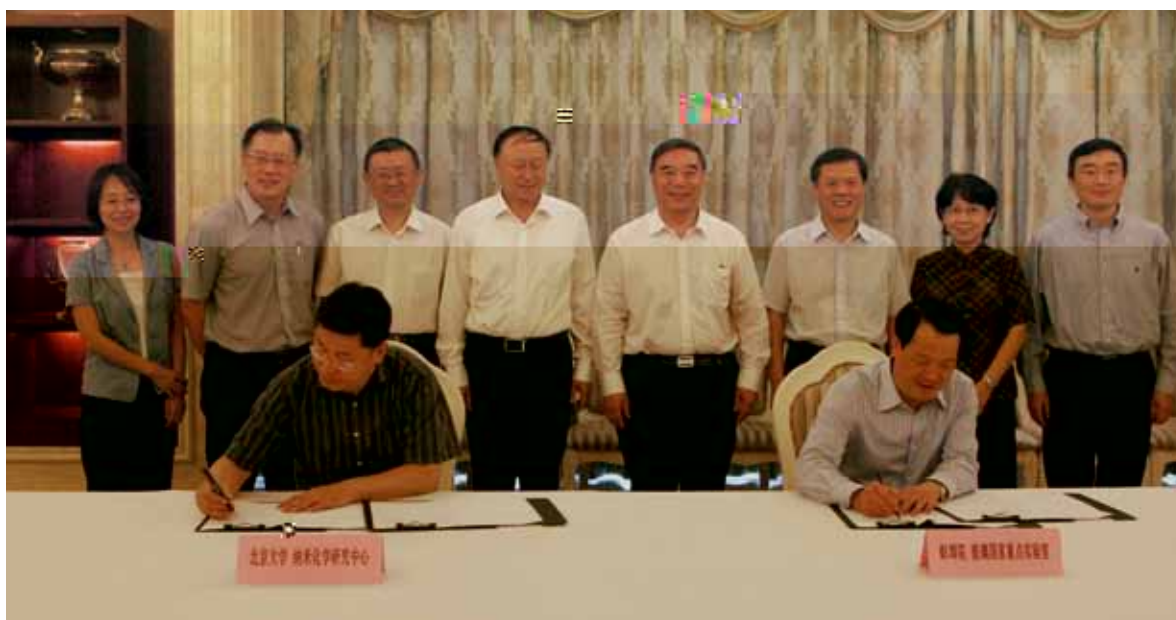
" "

10 40%
18 , 4100

" "



9 1





“ 2015

500 ”

“ 2015
100 ”

100 ”
10

“ 2015

“ 2015
100

” 9

“ 2015

100 ”



9 17 “

“ 2015 “ “ 2015 ”

500 100 100

100 ”

“ 2015 500 ”

“ 2015 100 ”

“ 2015 100

“

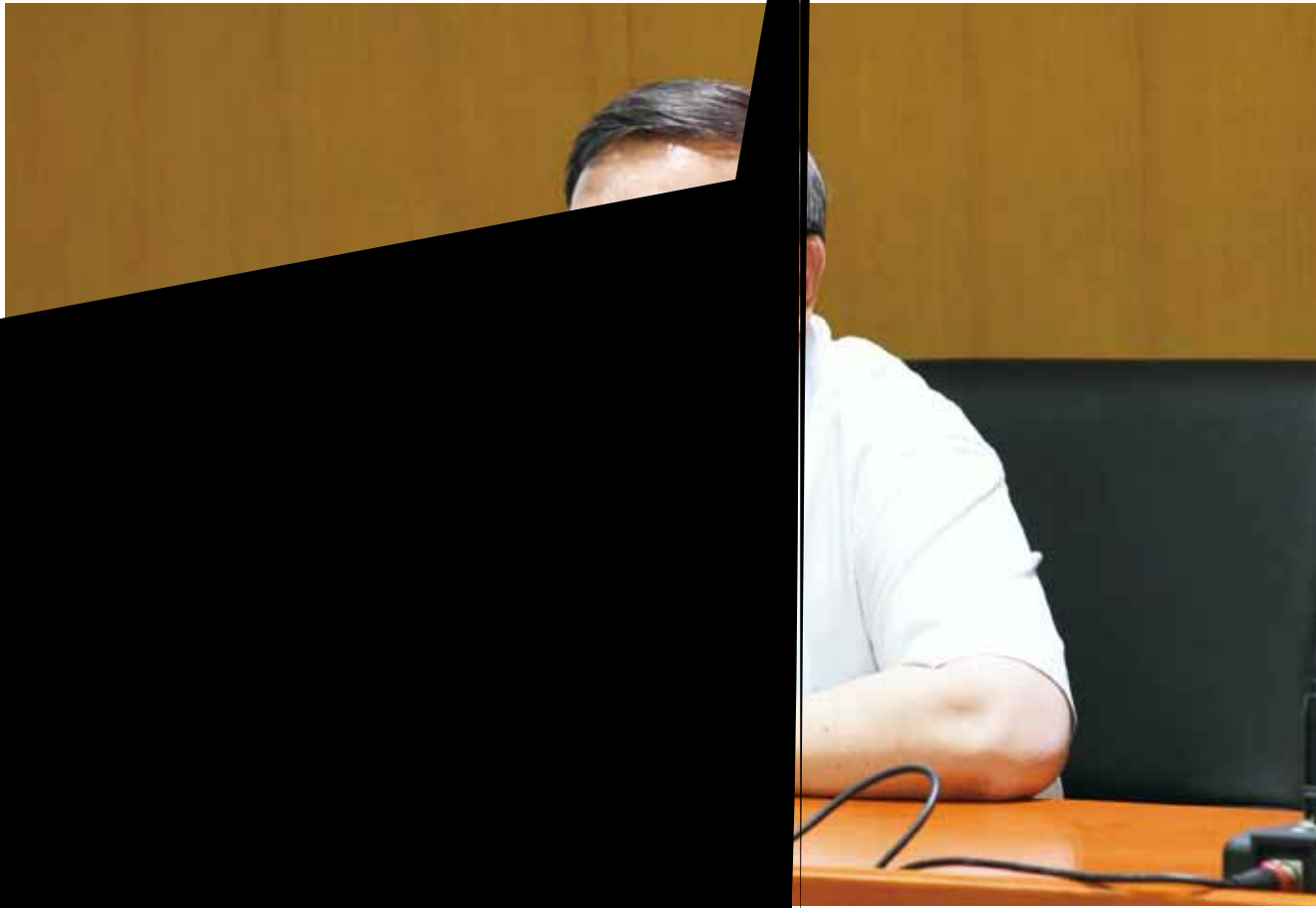
CTC

“ 2015 100 ”

“

“ 2015 2500 1 20 120

100 ” 40%



法人 代表

1984

" "

2002

2500

N

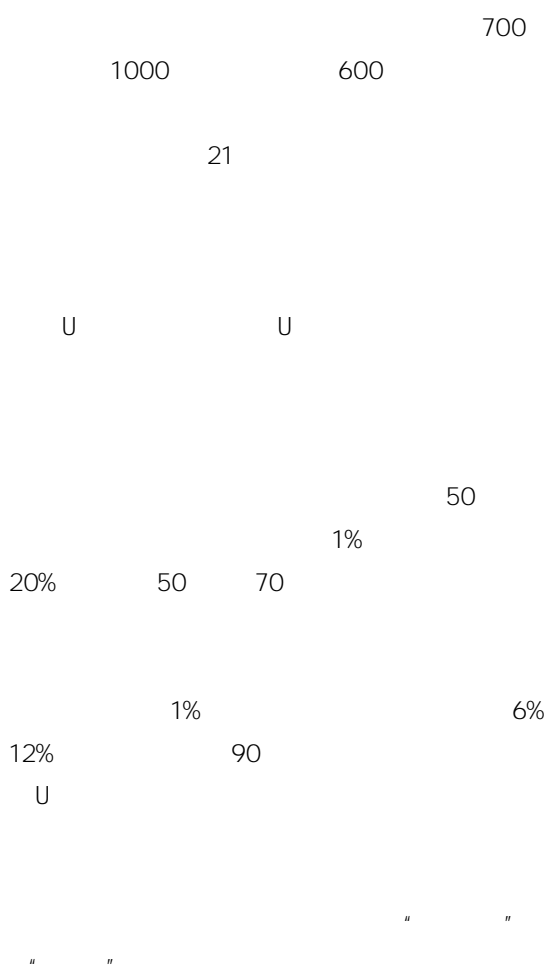
2005 2

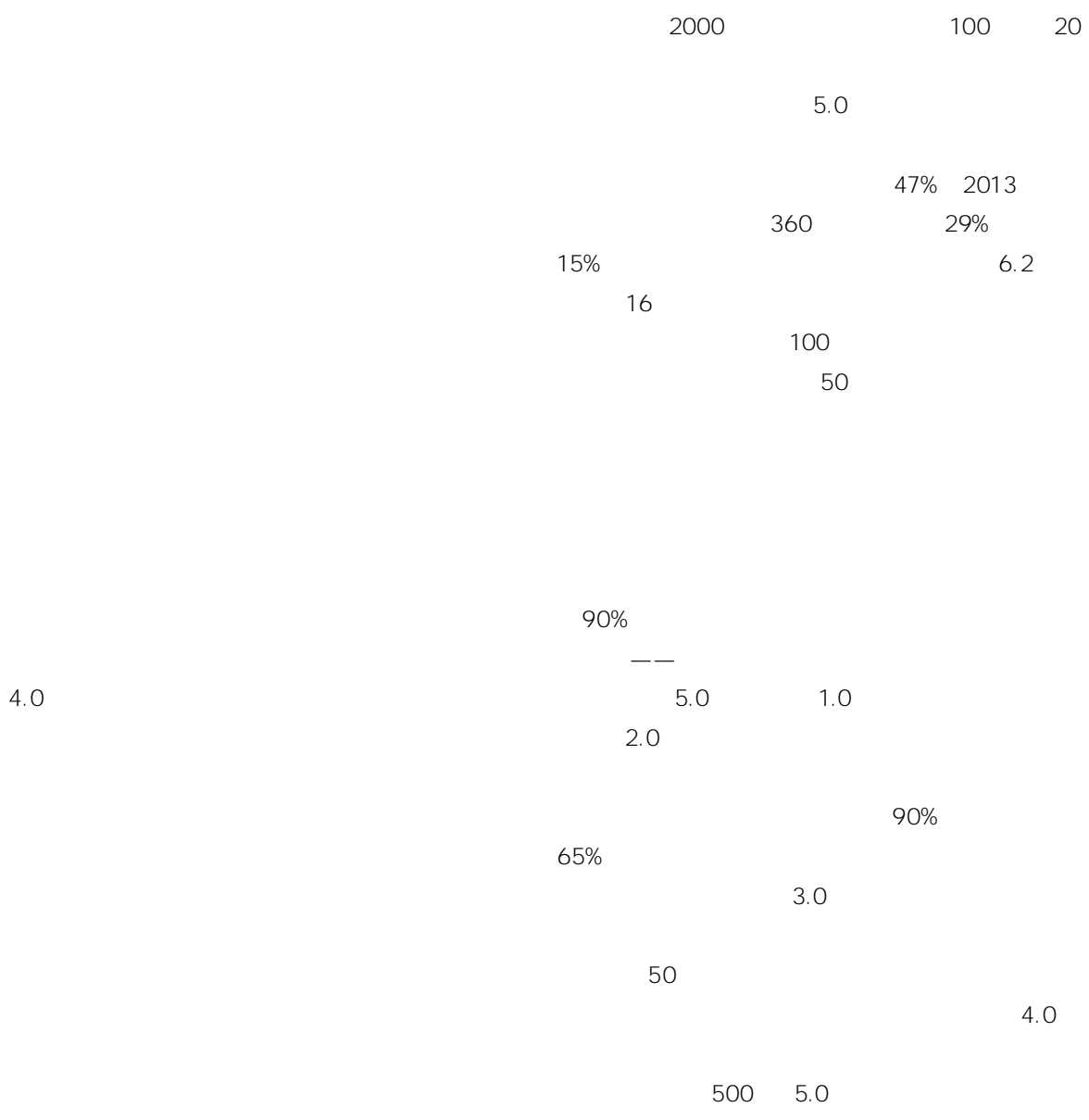
2006 3

500
 3200 CRH 400
 2500
 270
 500



1750
 2000
 1
 1700
 " " 2 " "
 7 1800 9.5 1900
 16 2000 1
 60 72 2100 5
 100
 12
 G7
 0 2050
 50% 70%
 • 21
 •
 SARS 21
 15 300







— —

“ ”

IBM

IBM

— —

“ ”

“ ”

“ ”

“ ”

“ ”

“ ”







" "



0.2

" "

TFT

2000

3000

0 1

2050

15%

5000

100

" "

4.0

+

+

+

1500

+

IT

+

4.0

GPS

" "

" "



40

500

2012 9

GDP

" =
+ "

"

"

"

"

" "

+

=

" "

"

"

"

"

" "

" "

"

S



1999 3 10
242 131

0



" "

2004

1

1.4 1200

2500

" "

150

150

30%

1/6

20%

3-4



1.

2009

1.

H

1.

100

2.

2

2011

5

20

3

EPC

N

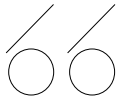
E

S

»

3.

4.



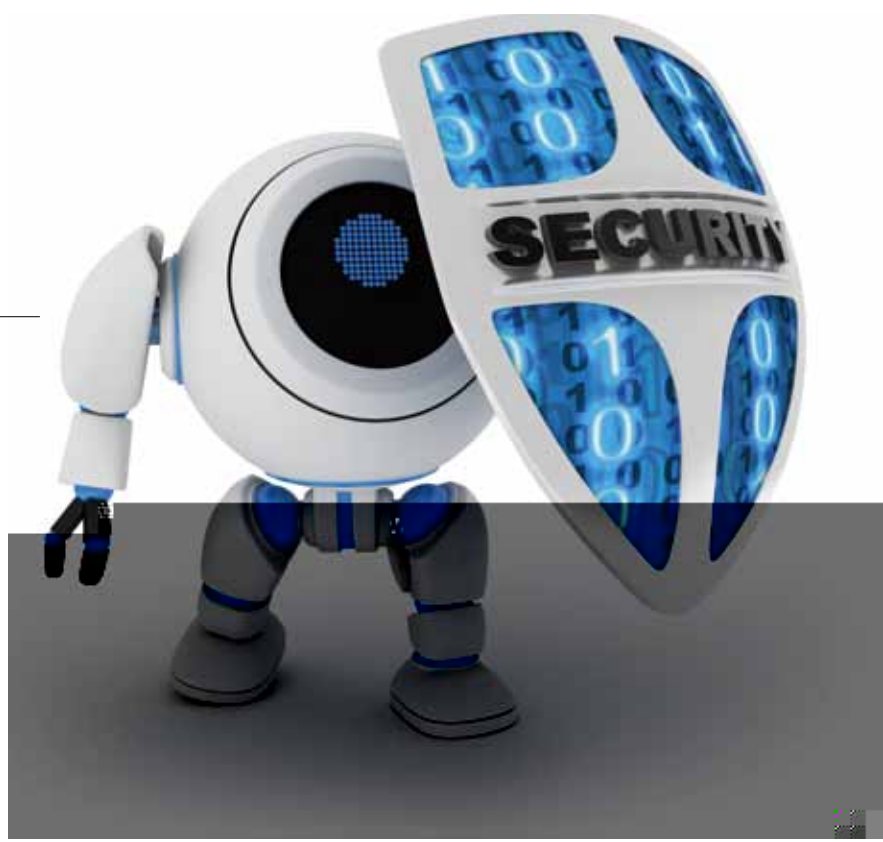
GB50173 93
 GB2887 89
 GB9361 88

Internet DMZ
 6

IPS



DAC
 MAC)



Windows Server 2008 Linux AS
5

Windows NT LMHOST
SAM

7x 24

" "

" "

100%

"

"

2014

4

“ ” “ ” “ ”

2014



“ ”
“ ”

“ ”

1991

“ ”

“ ”

“ ”

“ ”

40

“ ”

“ ”

“ ”

“ ”

“ ”

“ ”

“ ”

2010 —2020

“ ”

“ ”

“ ”

“ ”

“ ”

“ ”

“ ”

“ ”

“ ”

“ ”



玻纤网片展正业文化

“ ”

“ ” “ ”

”

“ ”

“ ” “ ”

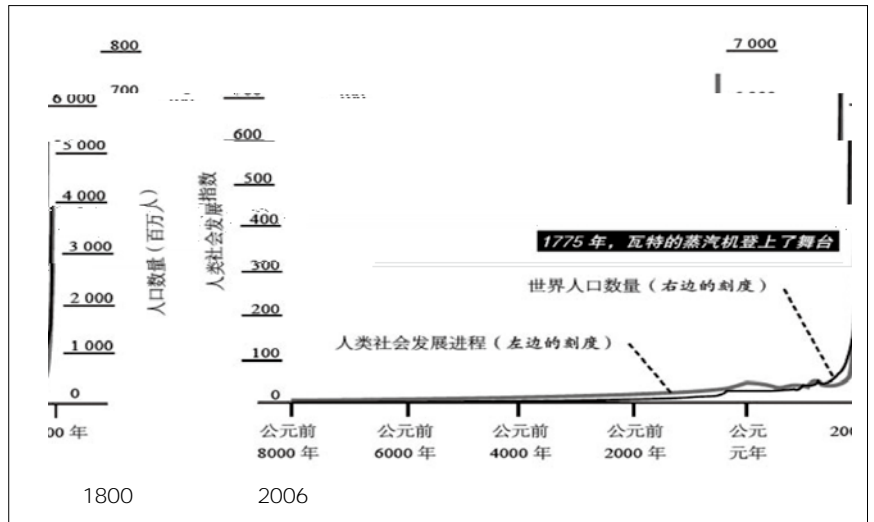
“ ” “ ”

“ ” “ ” “ ”

“ ” “ ”

”

× + + + =



0 1

1.

2.

3.

“ ”

A



2.

WTO + +

AK 47

1.

3.

” “ ”

“

1. “ ”
Materials Genome Initiative
2014 12 4

2. BIM

BIM Building

2001

66€ a O OQ - 4 ~
&d ẽ™

x Ñ

/ /

“ ”

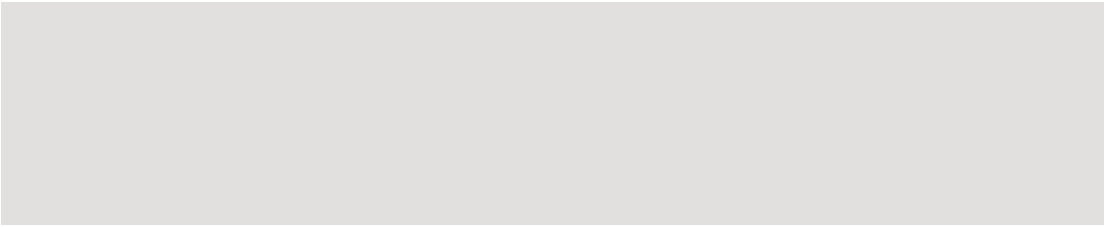
10-20

70

90

20

“ ”



2005

5000

2500

8

10 10 1
2 3
3 100%
" " "
" " 1
300
1# 2# 9 3
33 3
] 3
2800t/d
3000t/d
300
" "
C5

PNG LTD

BNBM

1997

" "

50%

2002

2007
HOME

CENTRE

2013
5

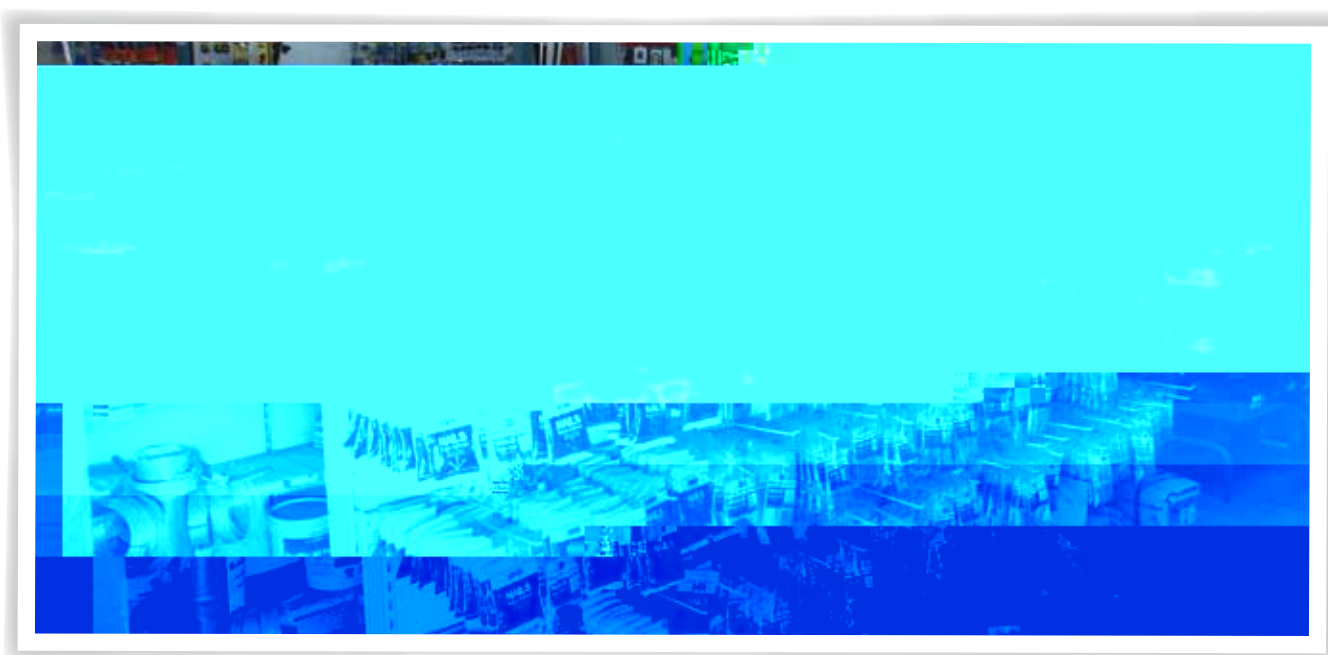
12

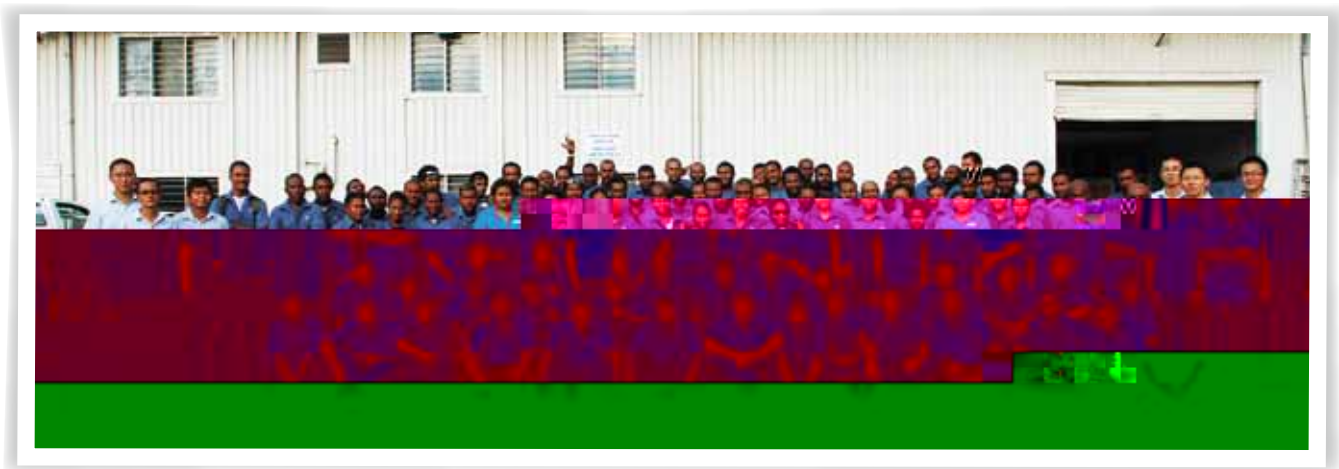
" 5+5"

70%

" BNBM"

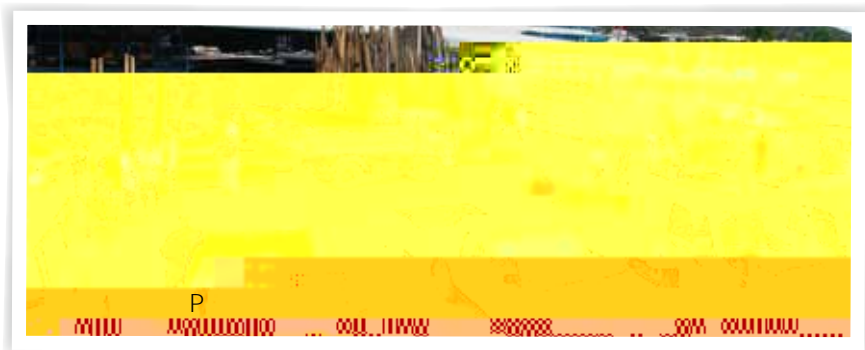
:





“ ”
“ ”

0



44 S R

#



8 30



6.1%

8
0.1 6.1% 7



9 25

2005 60% ~65% 2030 2005 45
2017
2020 30% 50%

1.4

2015 500
14,049.81
0.43%



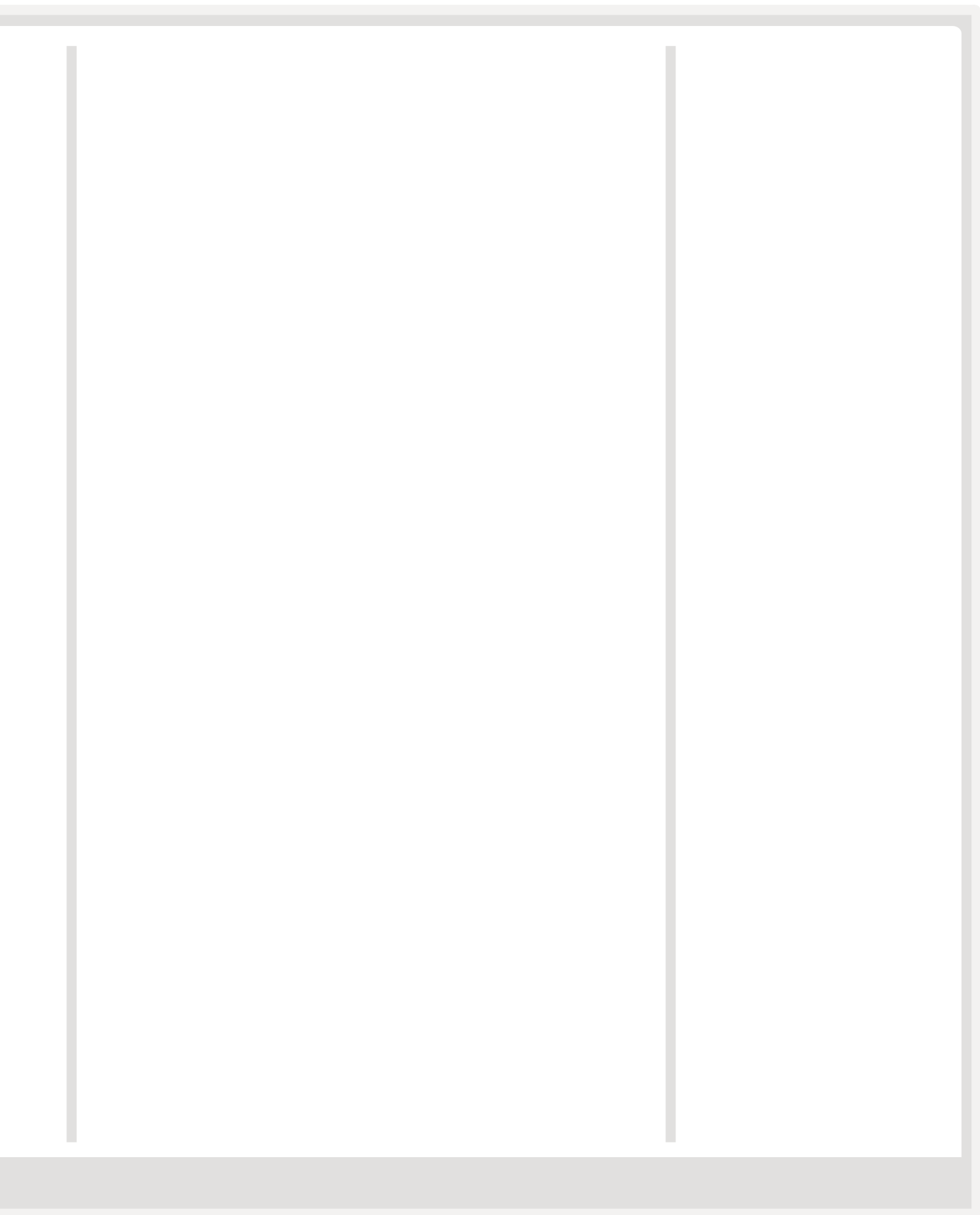
9 23~25

" " " "
" " " "

15.1

9 10

)

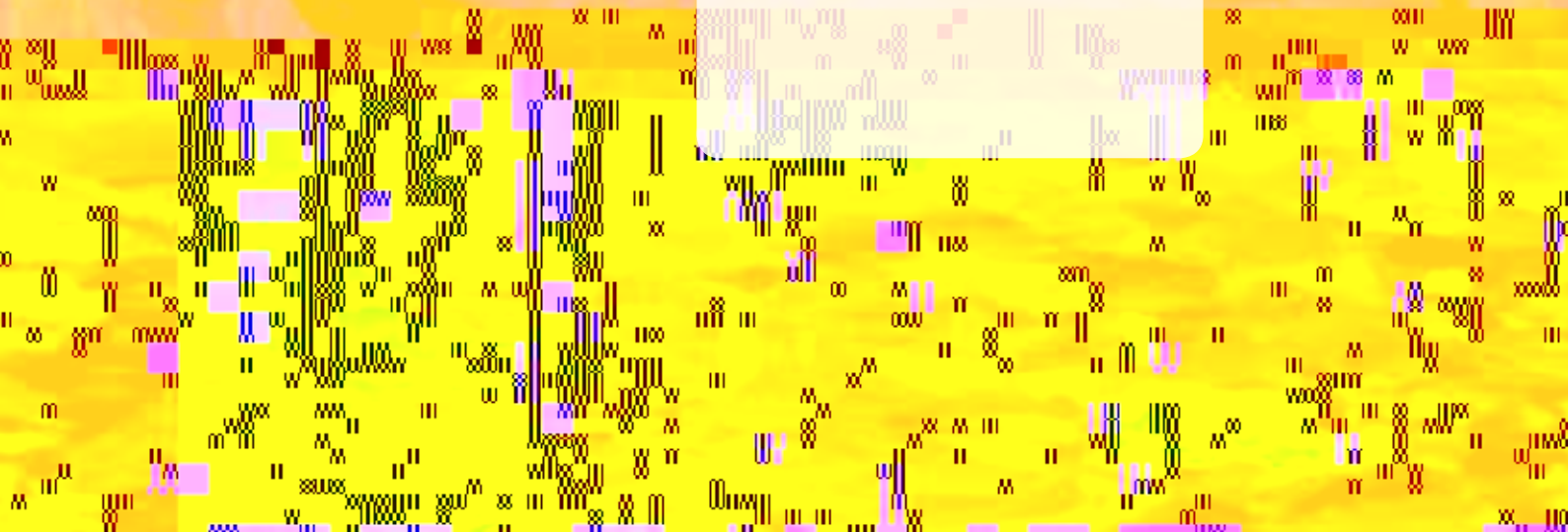
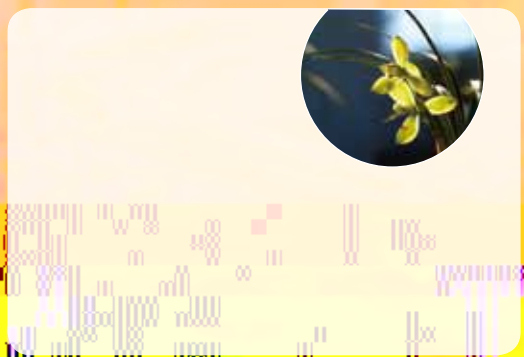




/ø...Š1É B



Ure A



敬畏感因
得體



乙丑

六月廿

心端

德

健

書



恭



心