

中国建材通讯

CHINA BUILDING MATERIALS MAGAZINE

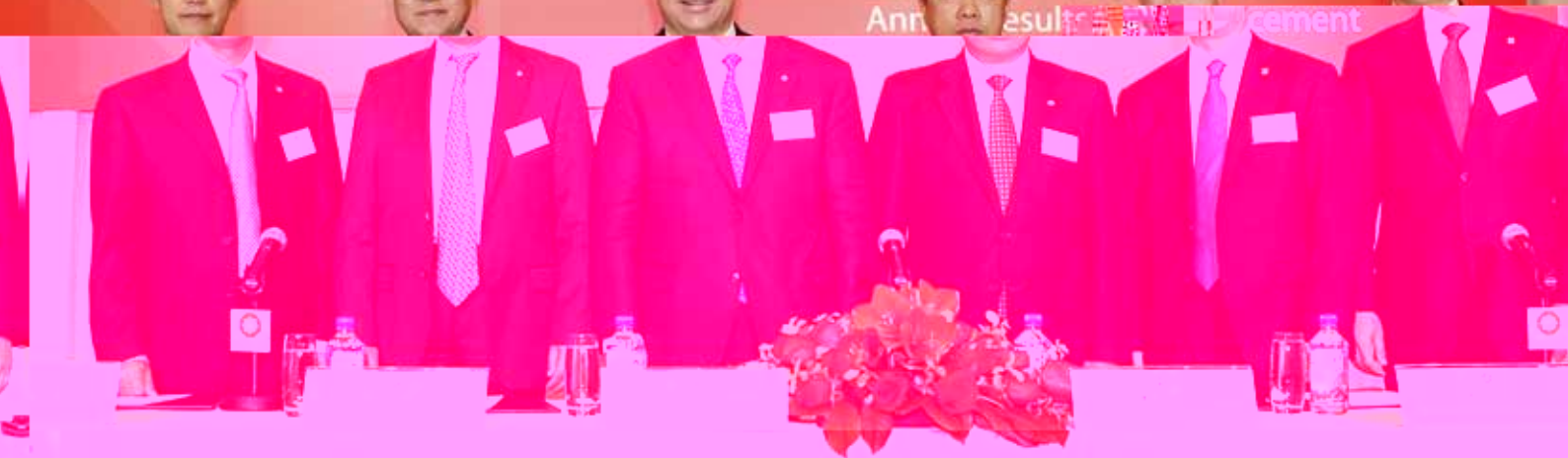


\$(#) \$Z% # " #Z#" \$
" *# Z>")&



中國建材股份有限公司
China National Building Material Company Limited

2015 年度業績
Annual Results



中国建材集团2016年提质增效重点工作部署暨上海工作会议

1



News in pictures

2



3



4

1. 2016
- 2.
- 3.
- 4.

Contents

2016

2- 3

101- 102



1

4

5

2016

6

2015

8

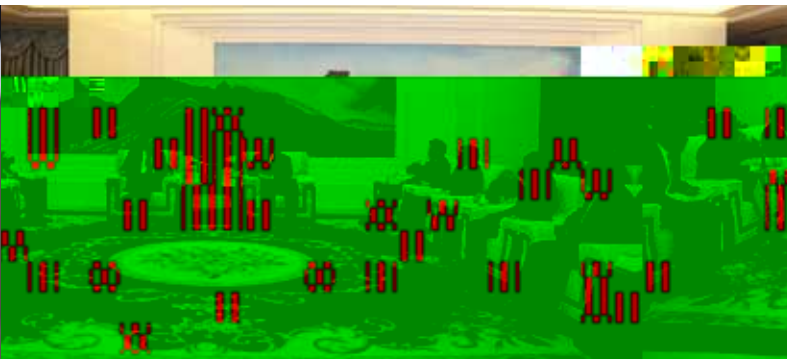
9

10

11

12

20



29

72

38

74

46

52

75

58

77

2016

8

64

79

66

80



3 23

0.2

ú

Ú

Ú

3 11

2016

2016

6



3 28 2015
3 29
2015 25
2015
2015
7120 2.8
6540 14.5
106 1003 25
41 5.3%



3 3

2016

6

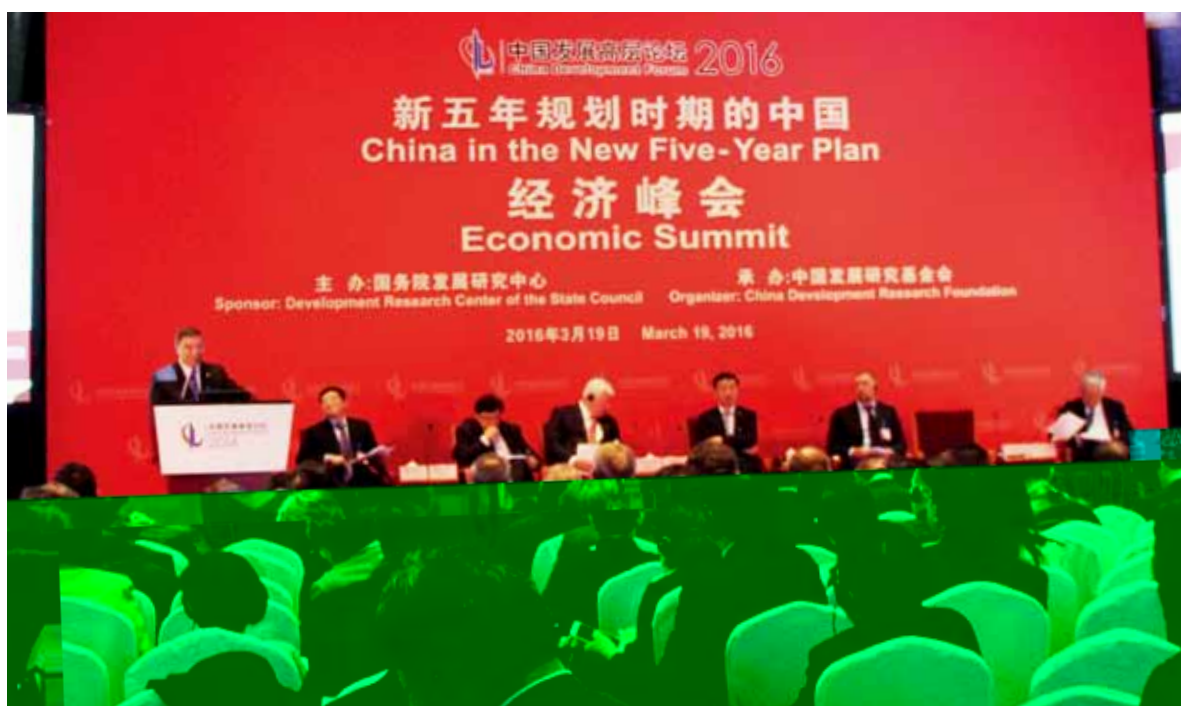
2015

2016

2015

1320

160





3 7

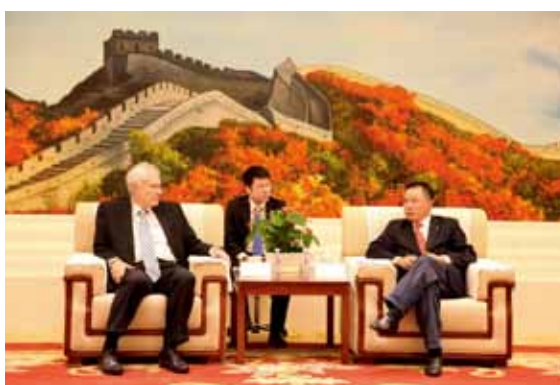


3 3

Poppinga

Peter Poppinga

Peter



Peter Poppinga

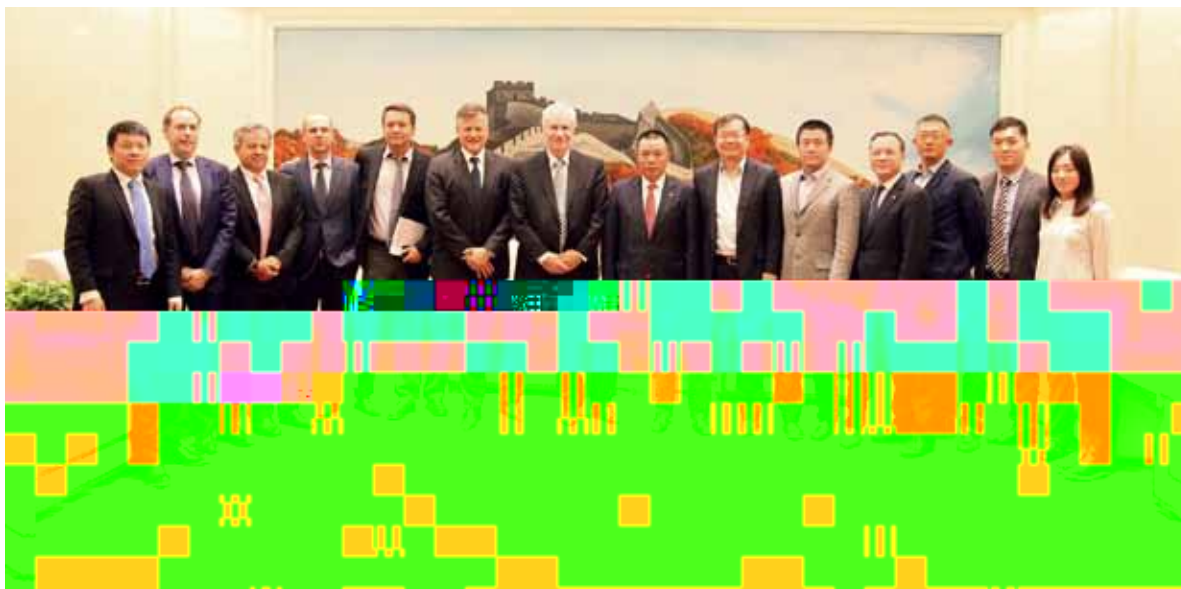
2015

Claudio Alves

Joao Mendes

Marcos Leite

Ferreira







20

6

80%

80%



1.3

13

4

20

120

1/3

2/3



23.5

1/2

TFT

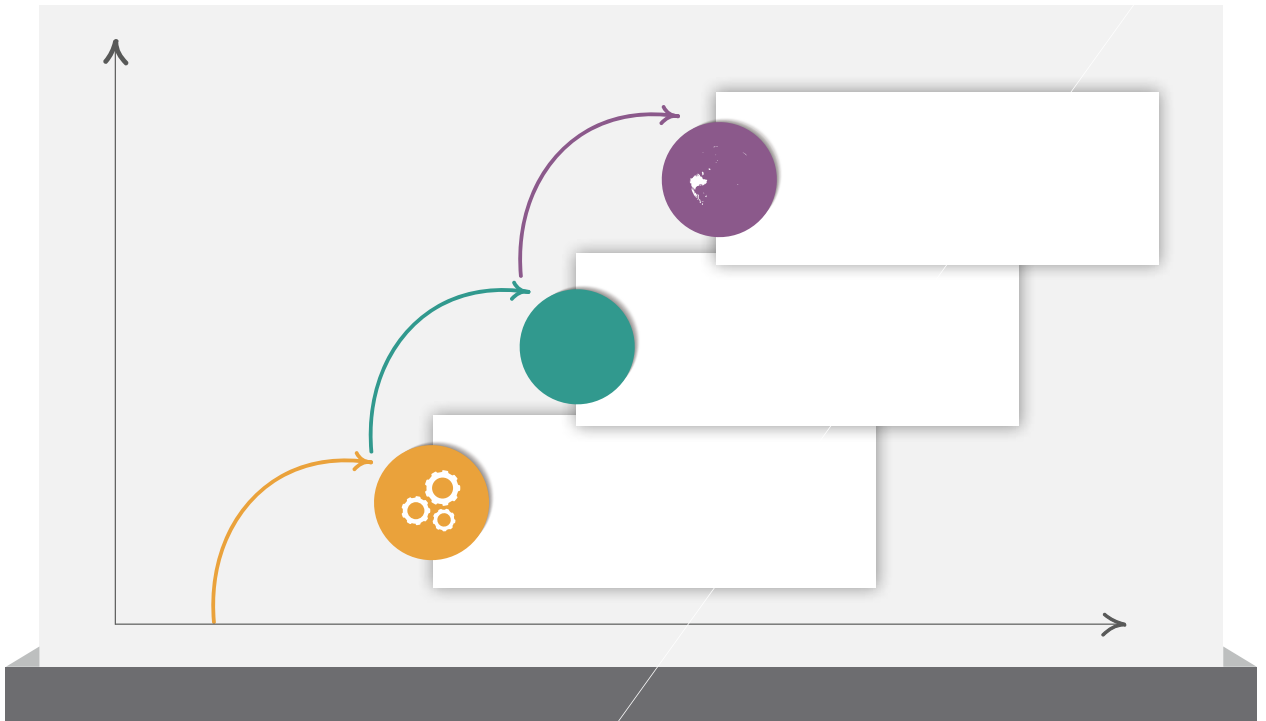
0.2

30

12

4.0

1.3



EPC

		2000	20	7
A			5	500
270				

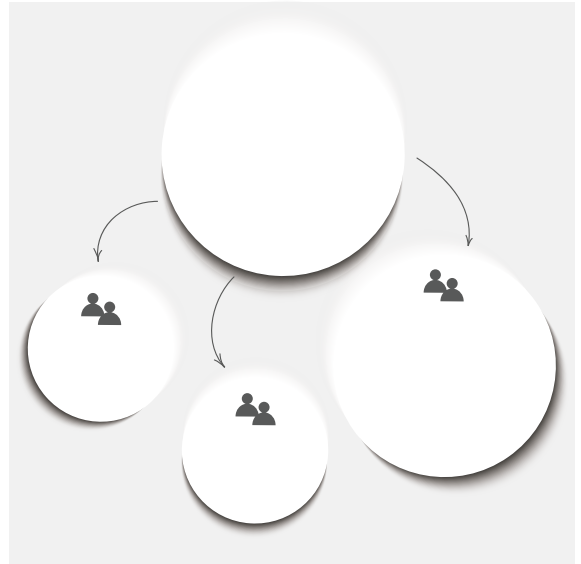
24.8 40
35 2014 23.5
60% 40%
50%

2008 4

2009

20 /

2014 7 15



CIGS

Avancis

1+N

1

N

30

4

10

10





2014

2015

12+3





4.0

3

70%

2009

70%

10

70%



3.2
5000
2000

2500



70%

150

‰



50%

3

GDP

67%

4 5



4000
100
100
1.2
70%



10
2006-2016

功 到 補 如

11

12

13

14

15

16

17

18

19

20

21

22

23

24

25

26

27

28

29

30

31

32



2006 3 23



2006 3 6



2005

A

A

10

10

10

12

.....2006 3
21
50 537
IPO
3 23 10 00

6
3.5 10
IPO 6 4

6 IPO 2006 3

Mission Impossible



21

H

§



2007 9 26

70%

HOLCIM

900

2007 9

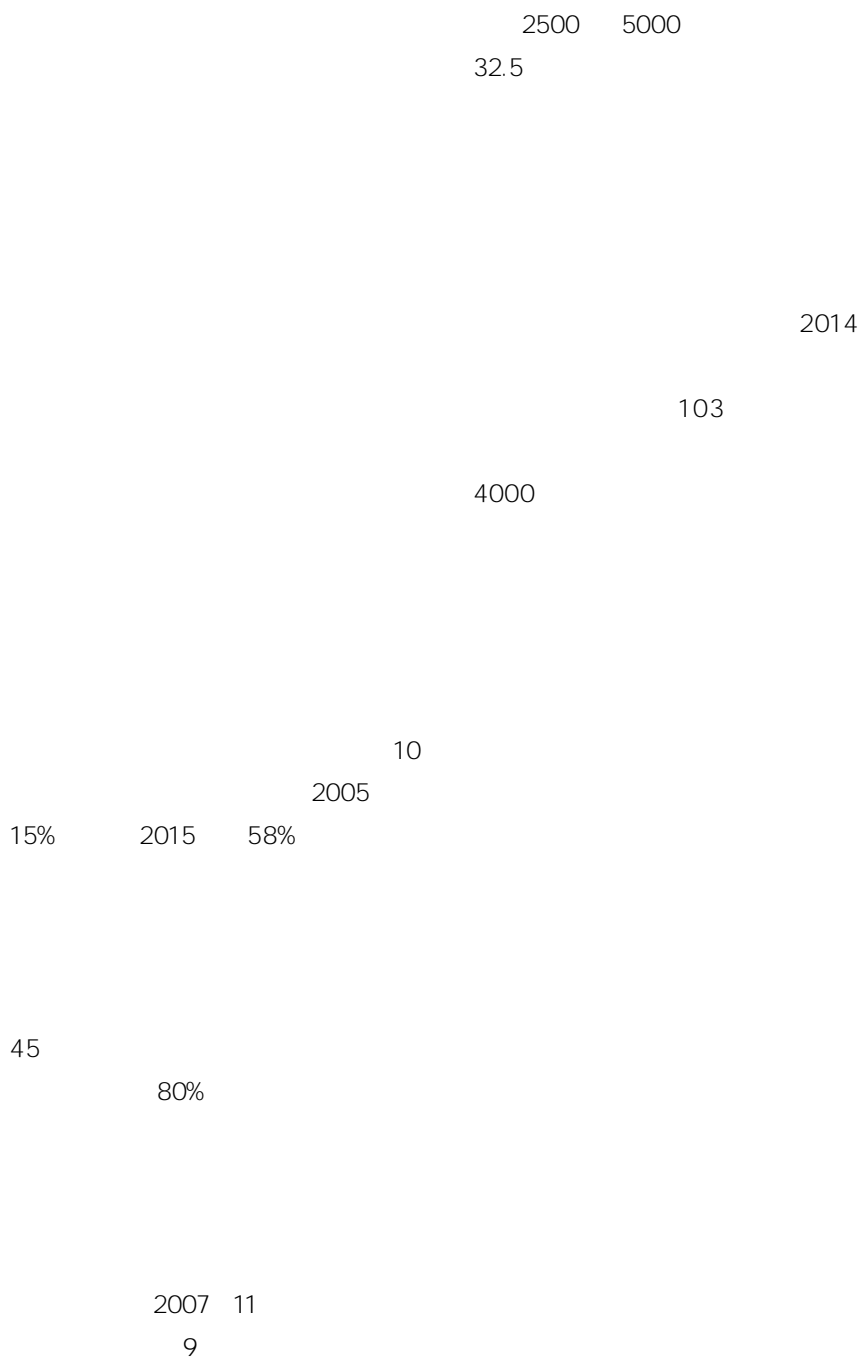
500

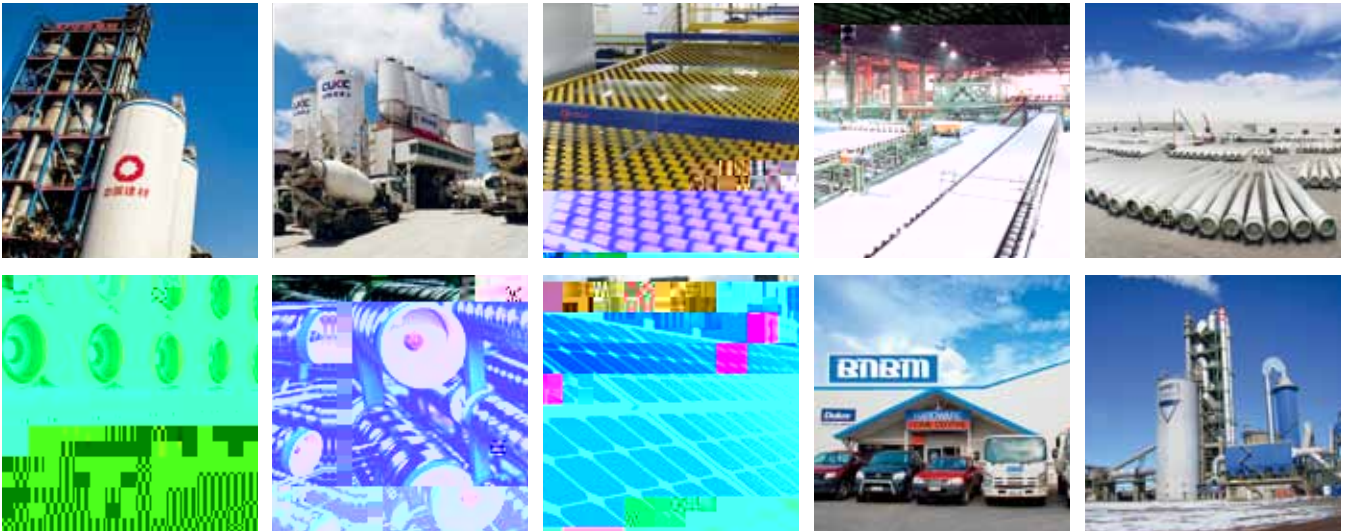
2011 9

5000

10

15%





1.5

150

T700 T800

Avancis

2000

3000

20

110
E6 E7



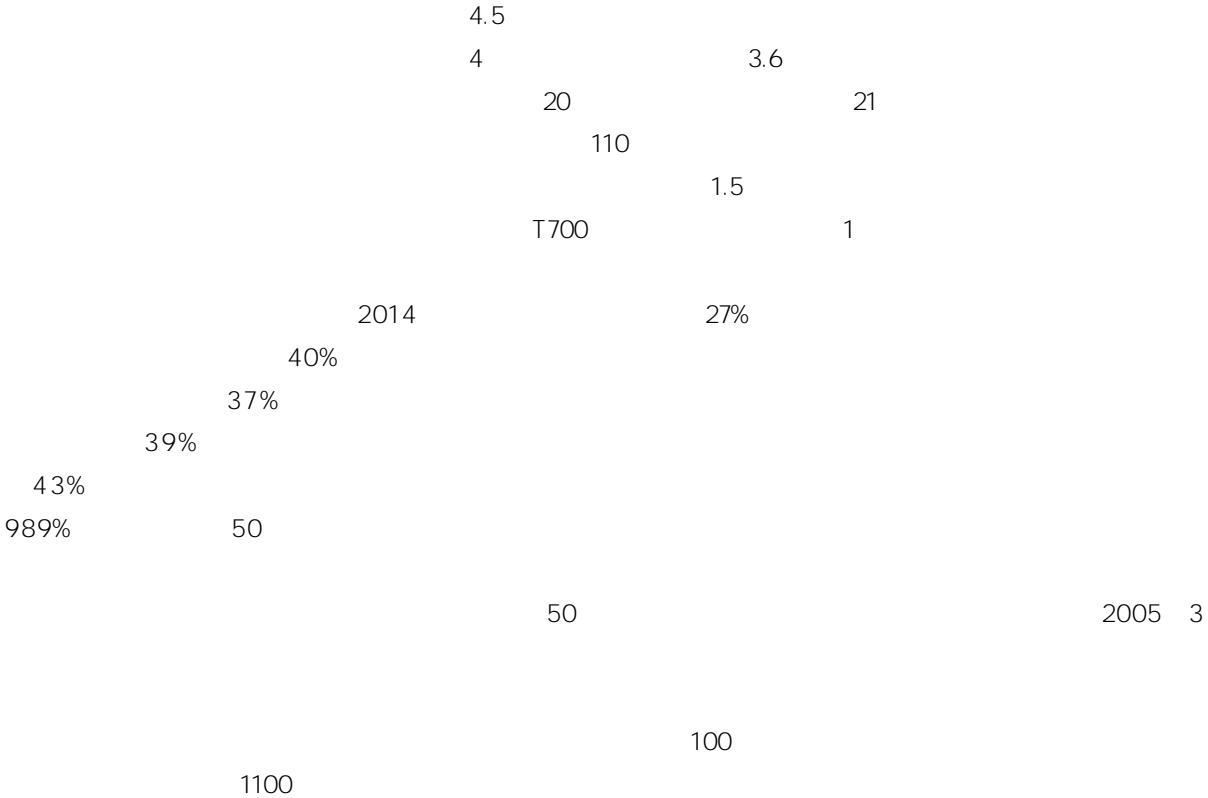
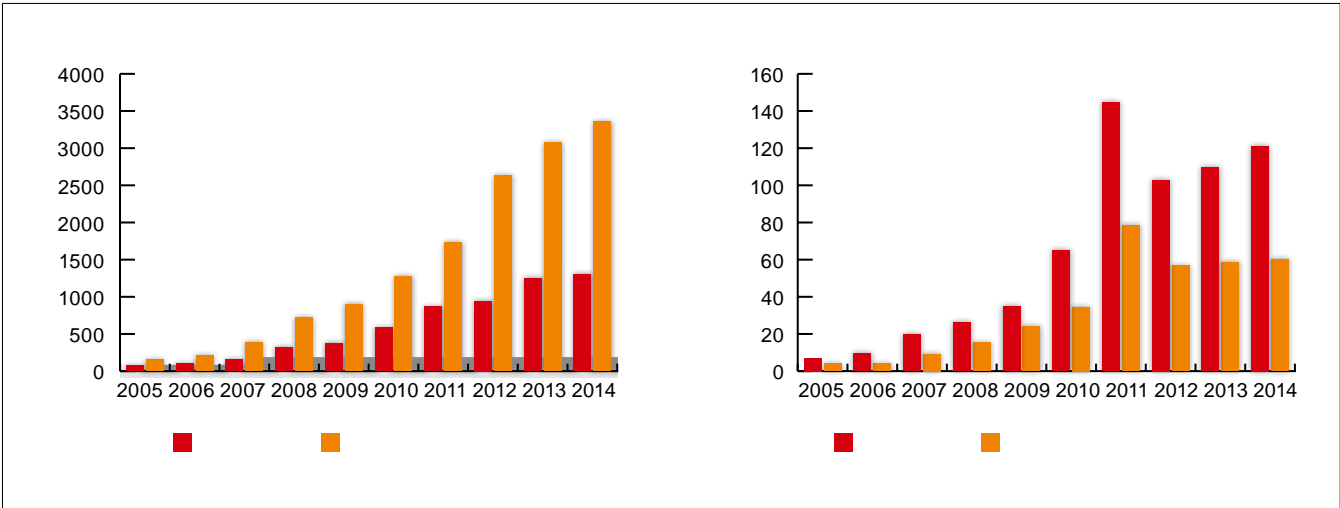
X J



2011 10 25



2011 3 23



110

2009 2

75

H

100

2006 3

100



2007 4 9 " 07 "

2006



2011 12 15

+

4

1000

2011

46.67%

53.33%

10

900

10


2005

15%

2015

58%

366



2006 10

2007 5

2013



2009 2 25

80%

68 6

T700 T800

2000

3000

60%

+ + 4.0

BNBM HOME

13

103%

60%

E6 E7

56%

40%

20%

10

4.6

9

30

380

1060



2509

150

2015

3327

1607

4

4

4



38.05

1.46

2011

1100

2008

+

+

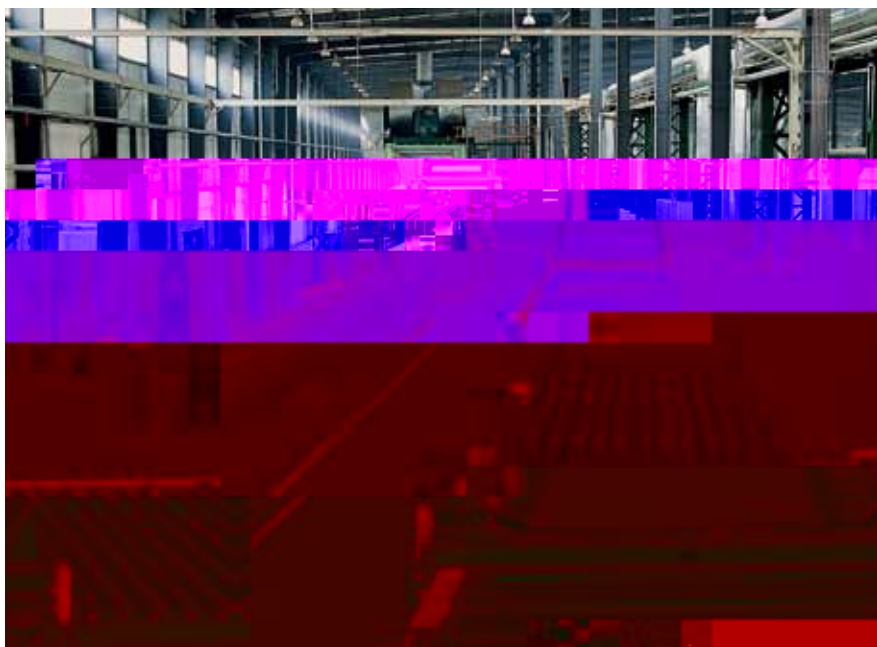






4.

2014 2015
APEC



2015

2014

64

1.

2.

24

80%

2014

2014

4.

2014

1100 /

40%

3.

160g/m² 180g/m²

20g/

2014

1913

2014

2.85

/

45.21%

5000

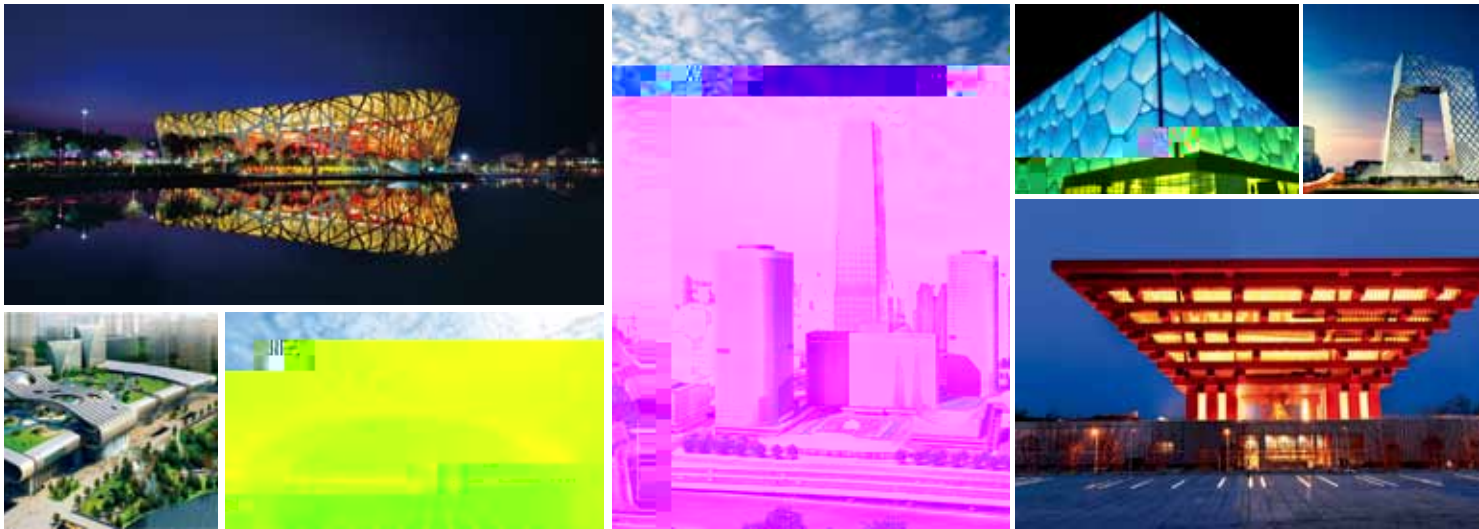
2009

3

12

7000

2015



2.
2014 8

104

4.

2014

50.2

1.

1329.44
10
14

300

850

47.78%
0.49%
3.01%

5.

2015

3.78%

3.

2014

2014

2014

2013



400

200-

100

2.

2014 2

2014 2

4

s

3.

10

2



2012 2013 329.7
58% 2014

90 2013

2000 2011 2013 24

12.17% 2014

2011

20.63

2013 24.8

2012

2015 23.48

4.9%

2015 33

2015
13.35
66.8%



1.

7%

1.9%

2015

1764

2014

500 700 /

1.8 1.9

2015

18.1

20

6

96%

32.5

180

50%

42.5

10%

6

2000

90%

2005

2.

30%

9

2015

3389

50

72%

10

52%

80%

3.

2014

42

58.6%



32.5
50%

32.5

10% ~20%

18% ~25%

2.

1.

2015

13.35

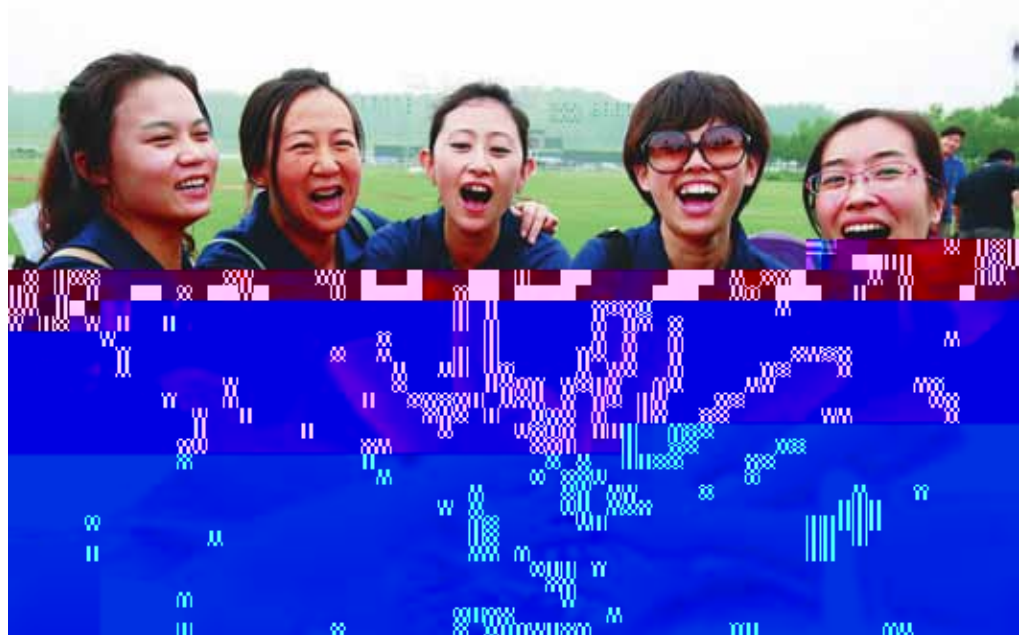
66.8%

€ ž › 1 € f M # à € J ` •

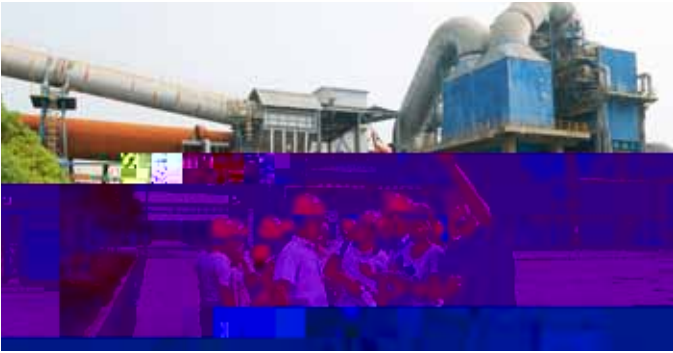
3.

1.
1

2







2

QQ

1

QQ

2

1

3

3

3

2.

4

1.

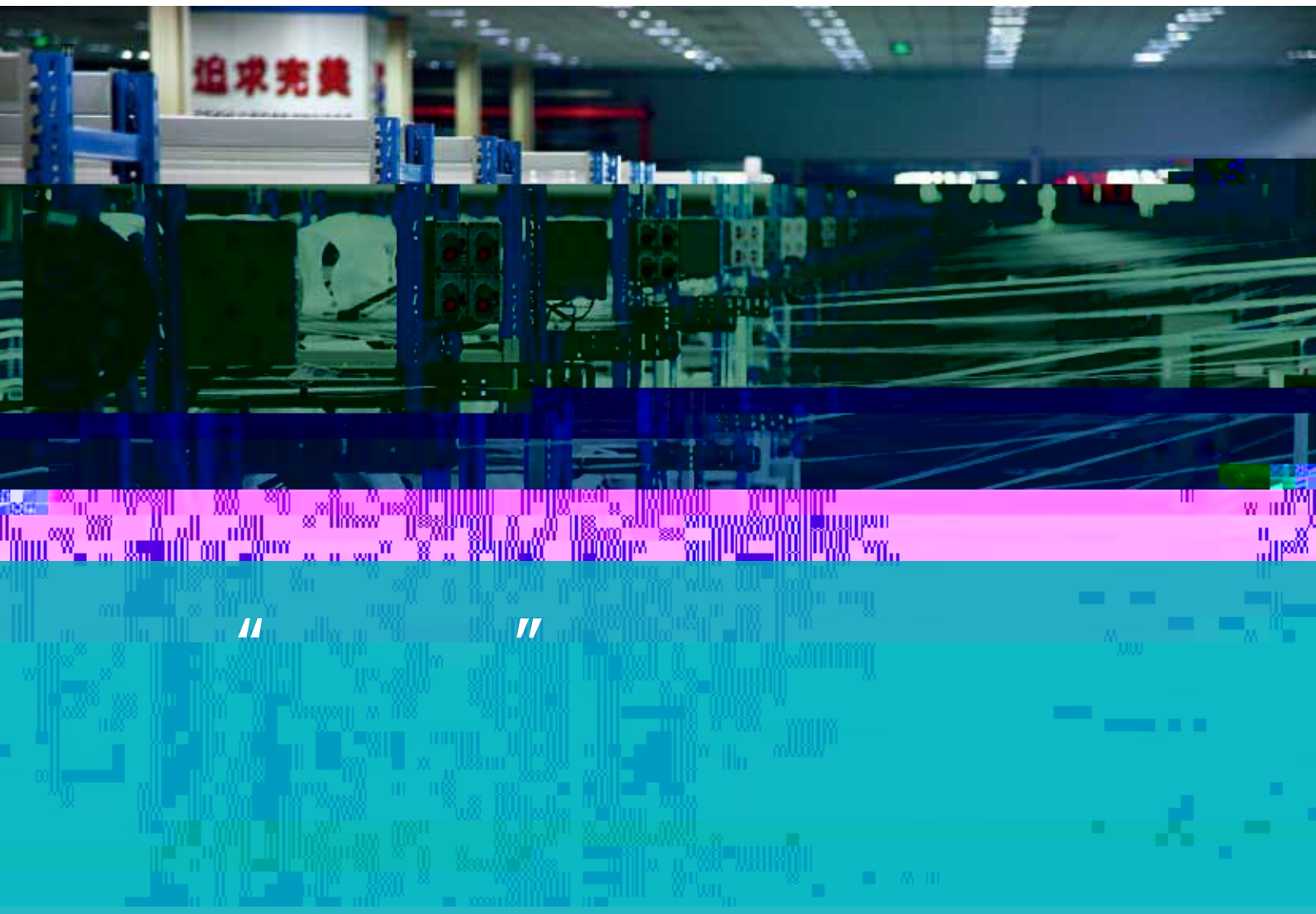
o

a

└

3.

CEO



8

2015

10

2015

9.22

1.5 1.8

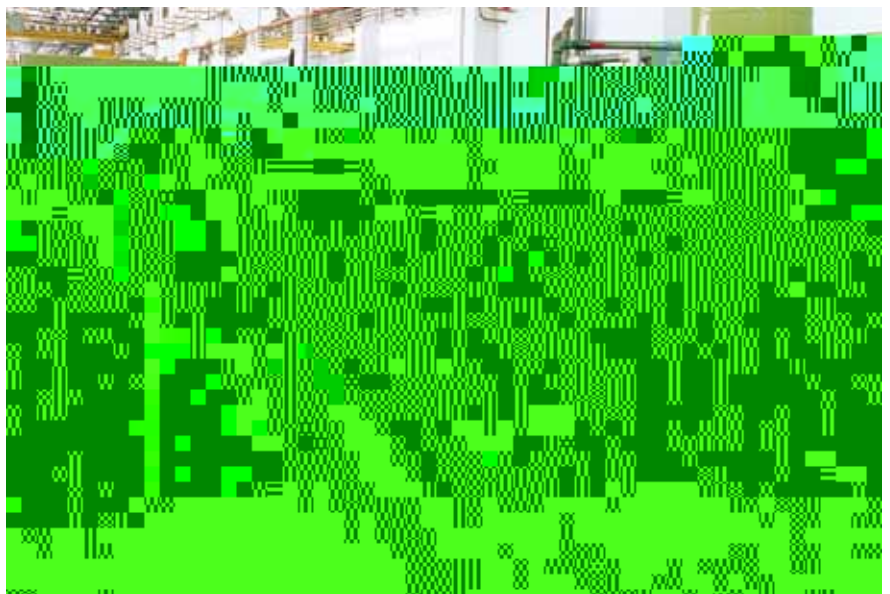
12.58

4 2015

240.78

3#4#

2015 64.6
213.18





2015 1113 55.65% 118.61% 150.02%

1989
1997

2003

2014 KPI 2015 33.91% 3000

2003

2005

1.5

2006

4 16

2008

6

g

1



TS16949

QC



1
1 3 6

10% 15%

80

30

2%

2003
12

2015

SAP

10

12

2003
25.53

0.58

2015

2003

1.15

2015

30.84

2015

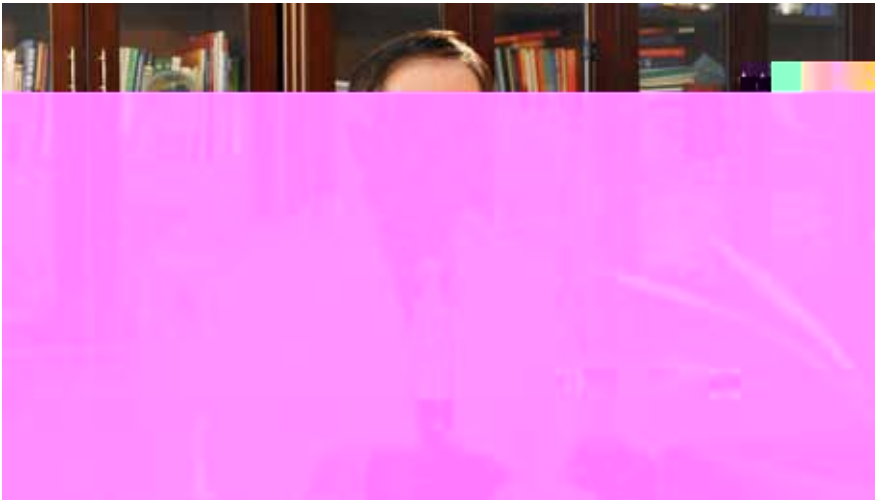
3

88

74
28.34
12928

24
68
63

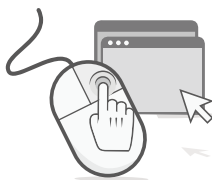
34
744
67%



CTC
2014 5
CTC
CTC
2009
19 6



70
3
7
1
2000
31
52
81.5
126



01

3 1
2016
2015
2016
2015
2016

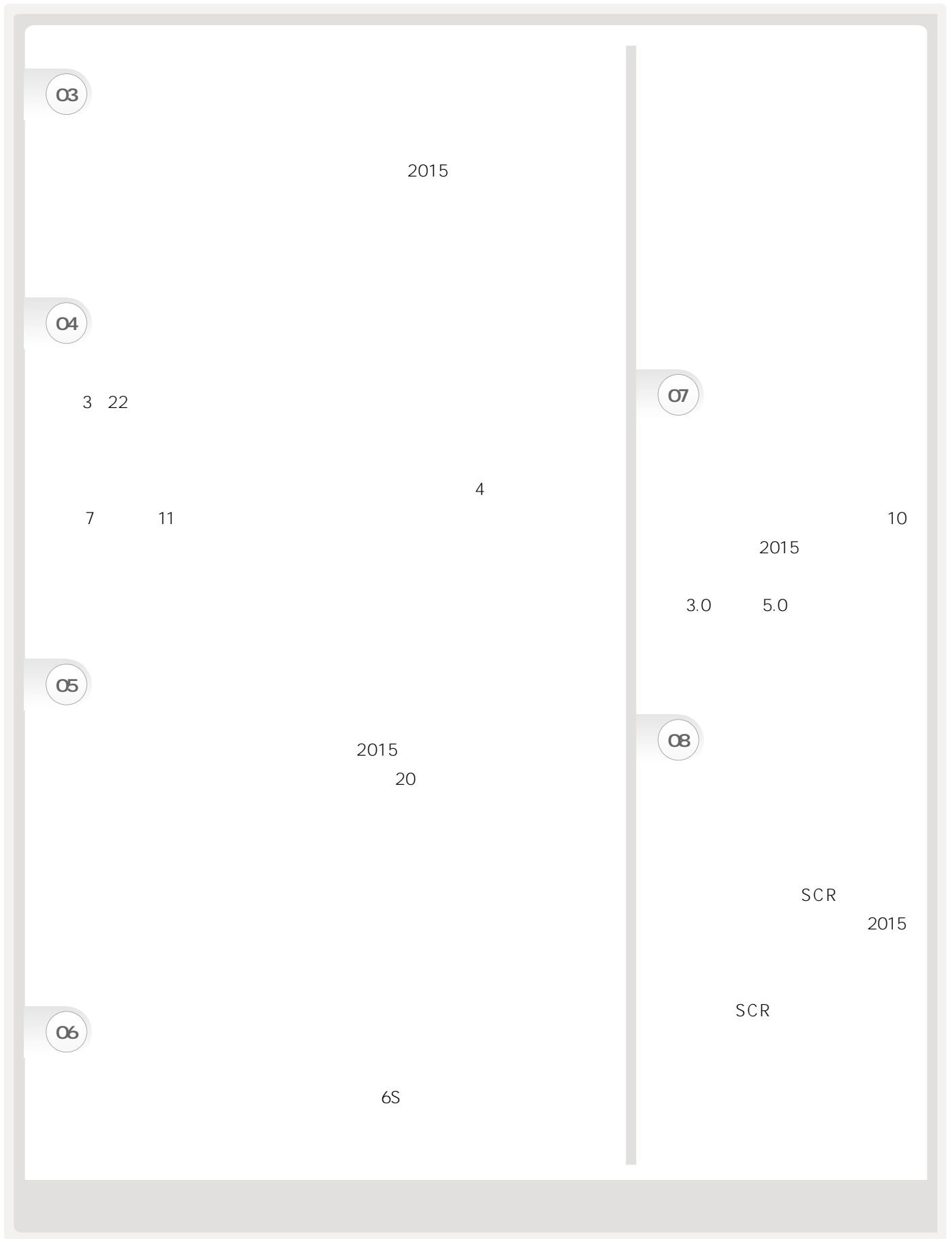


02

236 13

3 2 2016 46

15





寻梦南方

2014 7 1

2 11

“

”

“

”

2015 7

“

”

“

”

“

”

7 8

9

10

11

“

”

“

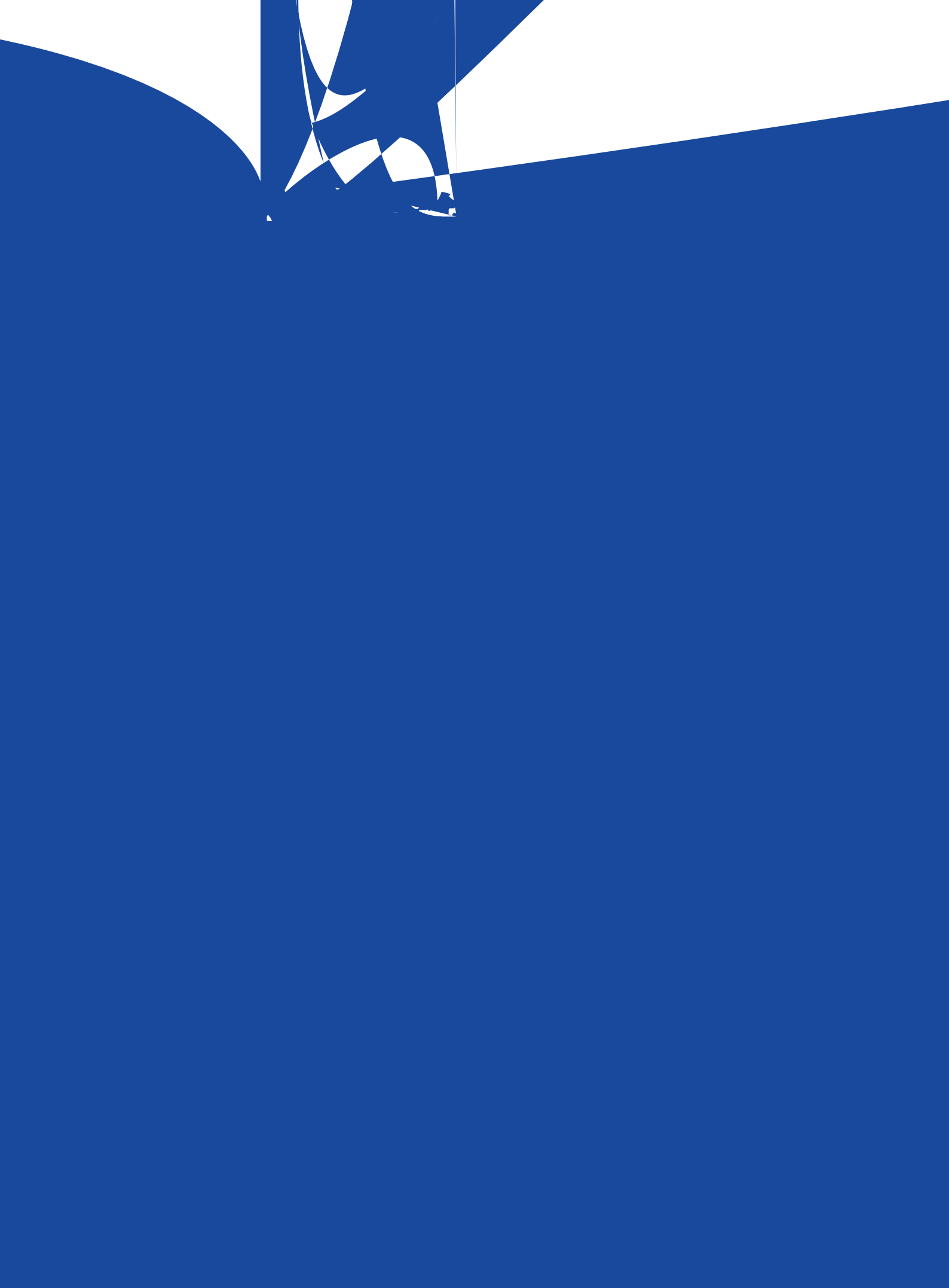
”

“

”

!

.....



和 創
諧 新

乙未咏月張

希人書

責 績

任 效

