

悦视界







30MWp



“ ”

“ ”

“ ”

“ ”

8 25 “ ”

“ ” “ ”

”

“ ” “ ”

”

“ ”



；
；
；
“ ” 20 ，

96 7 57



目录 Contents

2023 4 175



Preface	
	2
Special Report	
—— “ ”	8
	14
“ ”	16
	35
Focus	
—— 8 28	
	38
Home	
	“ ”
——	45
	48

Character

52

— 58

Salon

63

66

68

72

Record

" "

74

Read

77

Happy

81

82





材料创造美好世界

材料创造美好世界

中材水泥有限责任公司
Sinohydro Cement Zhuzhou Co., Ltd.



SPECIAL REPORT

特稿

8 25 “ ”

“ ”

“ ”

“ ”

“ ”

“ ”



喆



KPN

鸽

80

喆

24



”

”

”

”

”

”

”

”

4000

”

”

”

”

400

" 9

"

"

"

20



100

"

"

"

"



"

"

9

96 7 57

85.6

45

" " "
" "









“

”



“

”

“

”

“

”



“

”

“

”

“

”

76

30

196

10

2.4

15

16



1.7

496

—

60



8000

32

95%

40

"

"

3

" EPC+"

"

"

15

"

+

+

"

" "

"

"

30



+ " +



“ ”

10 “

”

“ ”

“ ” “ ”

“ ”

”

”

7

“ ”

“ + + ”

“ + + ”

“ ”

“ ”



" "

" "

" "

" "

" "

" "

" "

" "

" "

" " " "



2019

2022

8

" 4335"

" "

" "

" "

" "



2022

4

2

“ ”

7



“ ”

“ ”



E P C

100%

E P C

" "

" "



“ ”

“ ”



“ ”



“ ” “ ”

”

2008

5



MK3





“ ”

“ ” “ ”



” ”

” ”



” ”

” ”



“ ”



2012

11

76%

98%



“ ”



2002

87

327

89

15

“ ”

50

100



SOKOTO

"

"

3

"

"



30
" SINOMA" " CTIEC" " JU
SHI" " BNBM" " CTG"
500
2022 233
180

"

"











锐点





v \$





“ ”

” ”



“ ”
“ ” “ ”



“ ”



“ ” ……
“ ”

8

8 25

“ ” “ ”



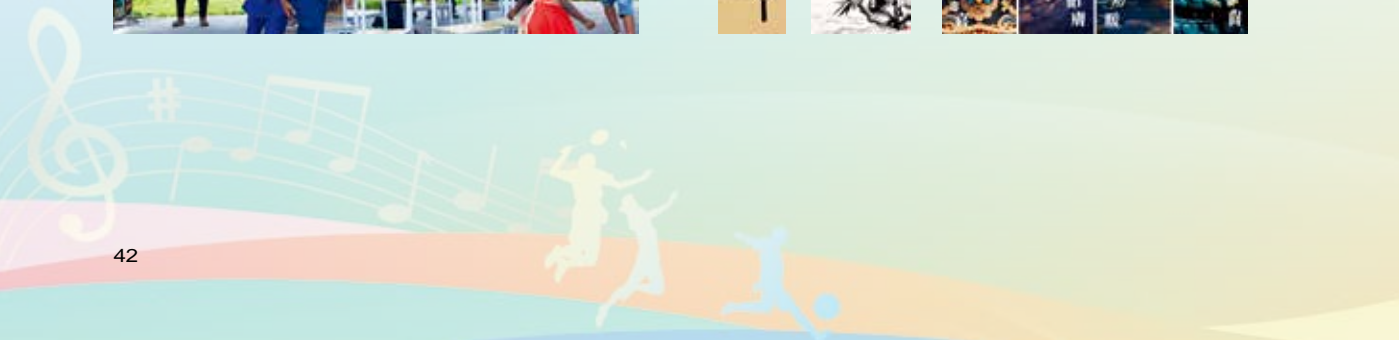


“ ”

“ ”

4000

“ ”



“ ” “ ”



” ”

16

” ”

” ”



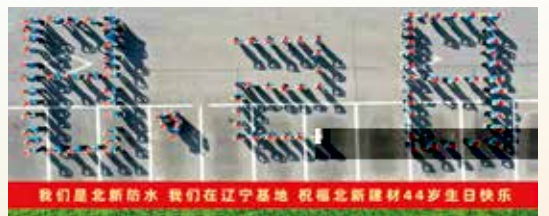
“ ”



8 28

8 28

” ”



44





"

"

"

"

"

"

"

"

"

"

"

"

"

"

"

"

"

"

"

"



"

11%

119

"

" "

"

108

"

4%

"

2023 6

86

"

"

2023 1

6

"

"

1

20

348

"

"

"

"



Home



2020 12

"

"

"

"

"

"

"

"

"

"

"

"

"

"



Home

" "

" "

"

"

" "

"

"

"

"

"

"

"

"



2021 4

2021 4 12

2009 6

14 2021

3

“



”



2014

”

“

“

”

2

5000

40

2

2020 5

“

”

2022

2021

”

3

“

”

“

“

”

70

2000

“ ”

3515

“ ”

”

“

”

“

”

5

2022 9



	200	10
25	45	1250
185	7	
		251.2
	“ +	
+ + ”		
	“	
”	“	
” “ ”		

2022 10

1

“ ”

“ ”

2021

3

”

2023

“

11

2022

“ ”

“ ”

“ ”

“

3

” “

“ ”

”

“

”

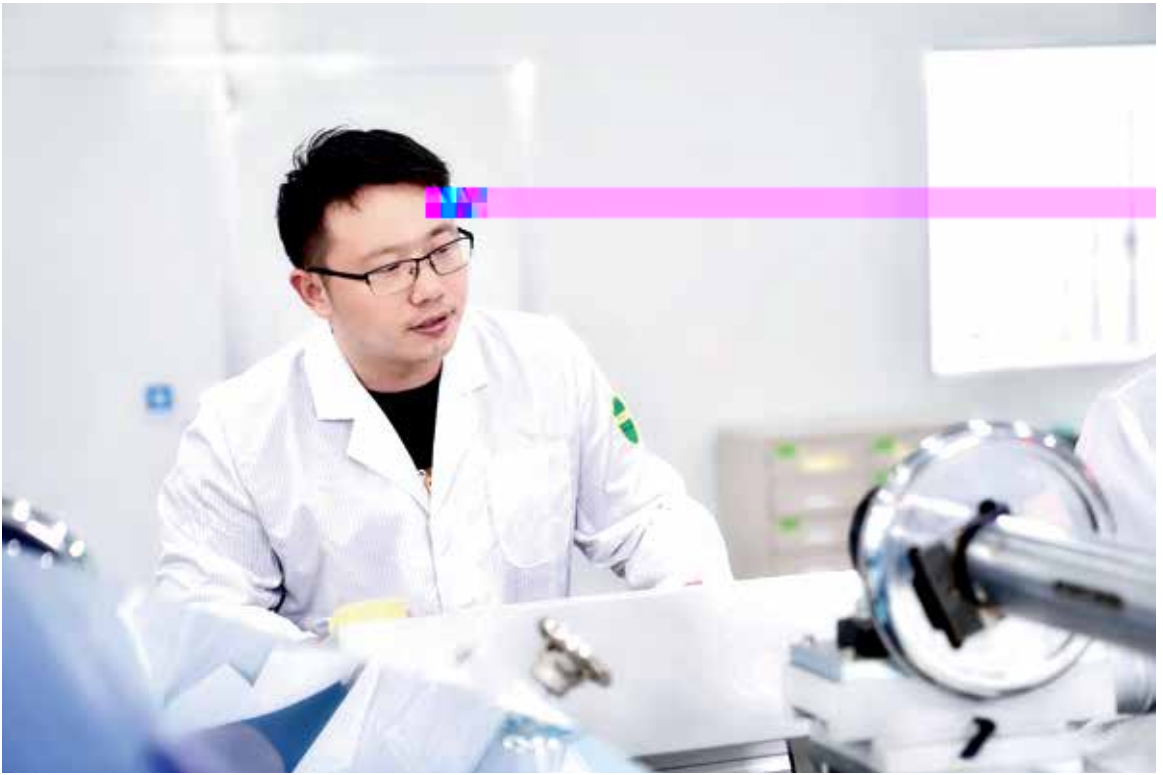
14

“

”







2019

“ ”

“ ”

T800

T800



“ 蹙

T800

T800

”

T800
T800

“

SYT55G

T800

“ ”



8

”

“

2

”

“





沙龙



5

10

“ ”

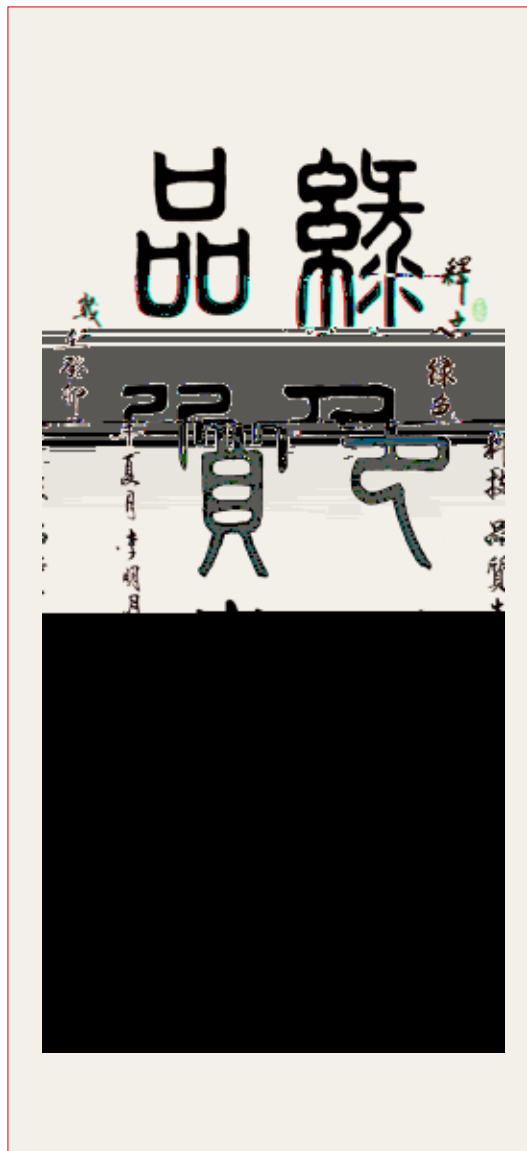
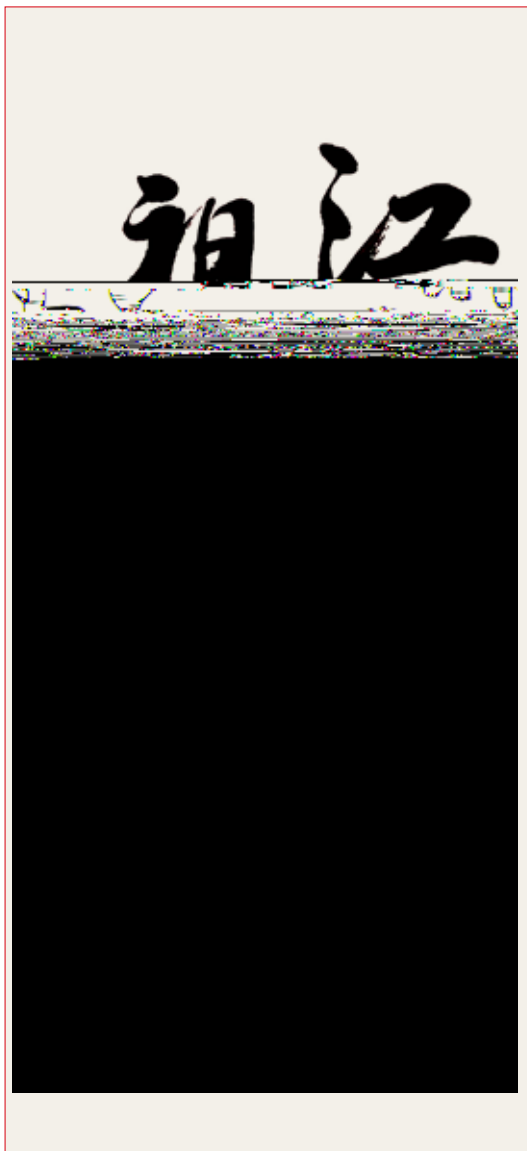


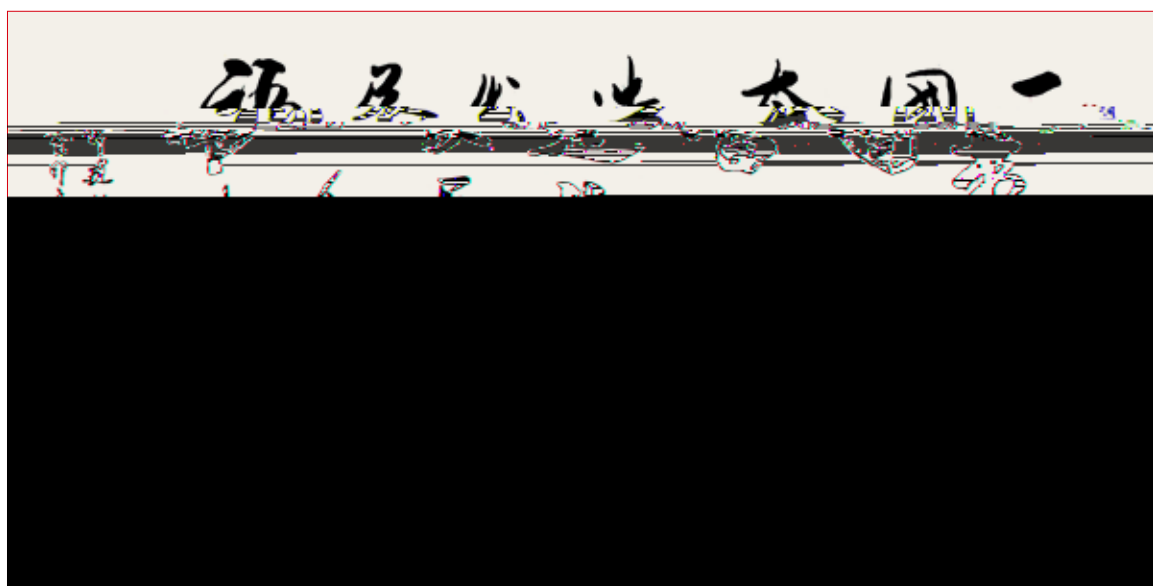
“ artist ”

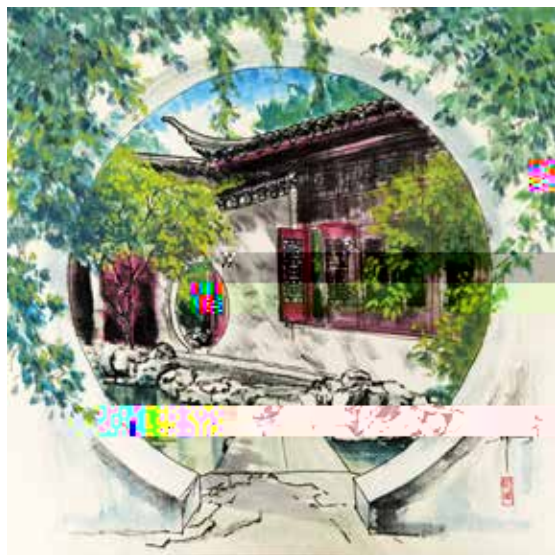
2023

“ ”







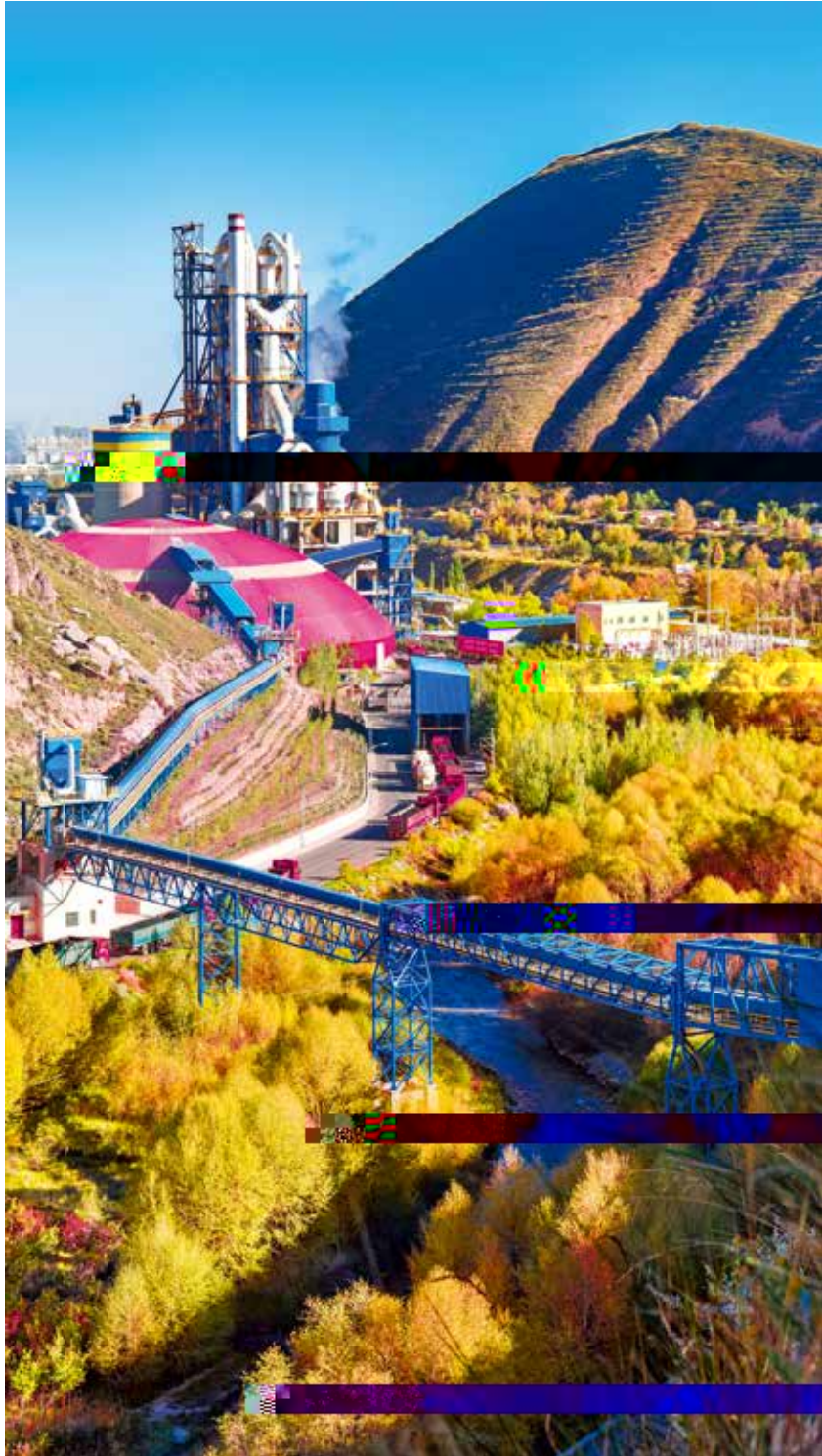




青山不老 绿水长流 癸卯年元月







漫记

“ ”

“ ”

“ ” “ ”

“ ” “ ”

“ ”

2013 3

5000

150
2021



2021 3
6500
16

ASKARI

" " "
" "
"

2022 10 27

" "
"
"
"
" "

EN





书香

138- 139

” “ ”

“

“ ”

“ ”



Read



“ ” “ ” “ ”

4 12

“ ”



“
”

“

” “

“

”

”

“

”



The background is a vibrant, stylized landscape painting. It features rolling hills in shades of green and blue, a large red sun or moon in the sky, and a body of water in shades of blue and green. In the foreground, there are several trees with red and orange foliage, suggesting an autumn scene. The overall style is soft and artistic, with visible brushstrokes and a warm, inviting atmosphere. A large green circle with a white border is centered in the upper half of the image, containing the text '悦吧' in white. Below the text, there are two small white squares stacked vertically. In the top right corner, there is a small horizontal bar with green, yellow, and pink segments. In the bottom right corner, there is a small horizontal bar with red, green, and blue segments.

悦吧

：



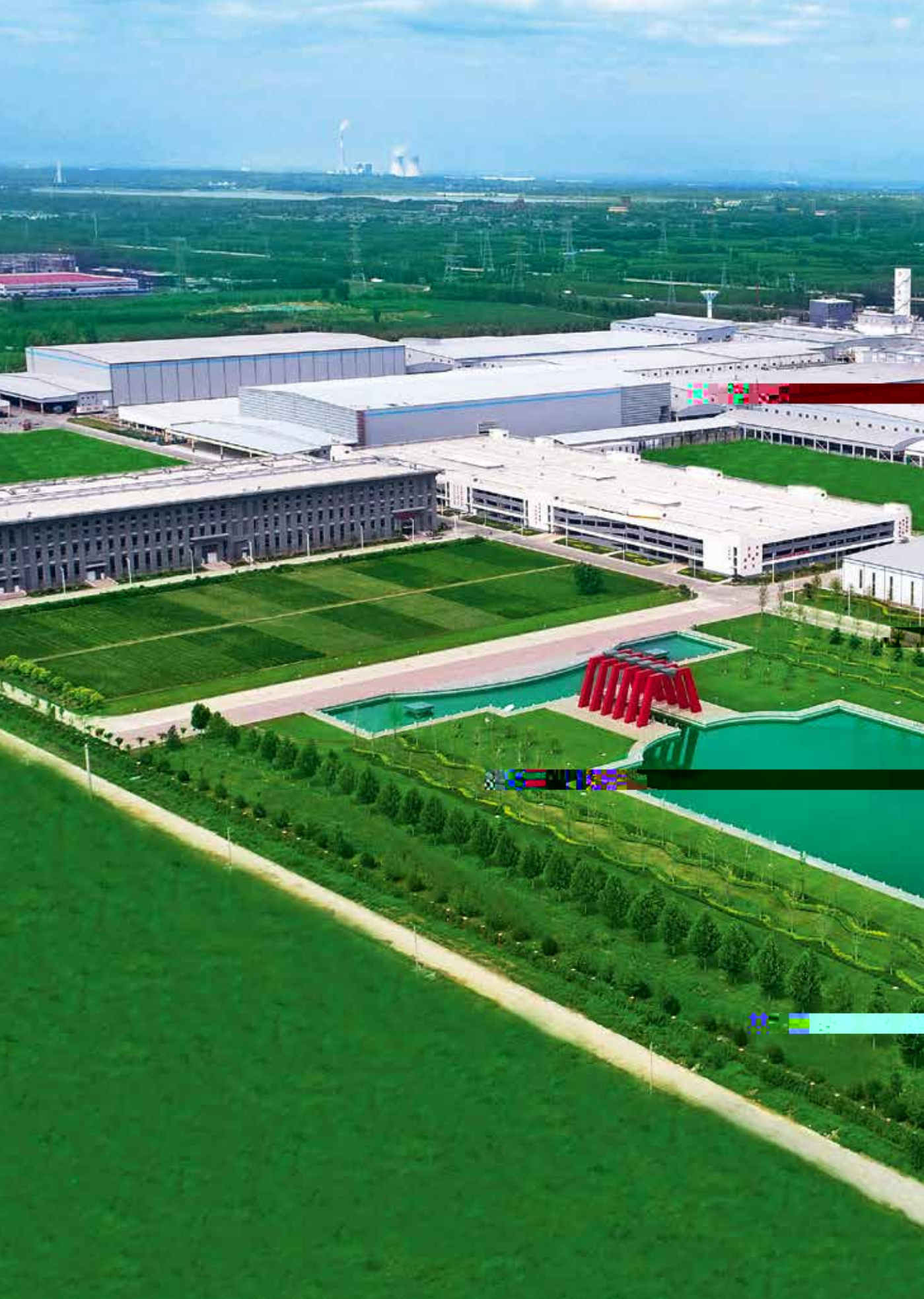
Happy



“ ”

“ ”

“ ”







中国建材



扫描关注官微
查看更多信息

www.cnbm.com.cn